

Stock Code:300763.SZ

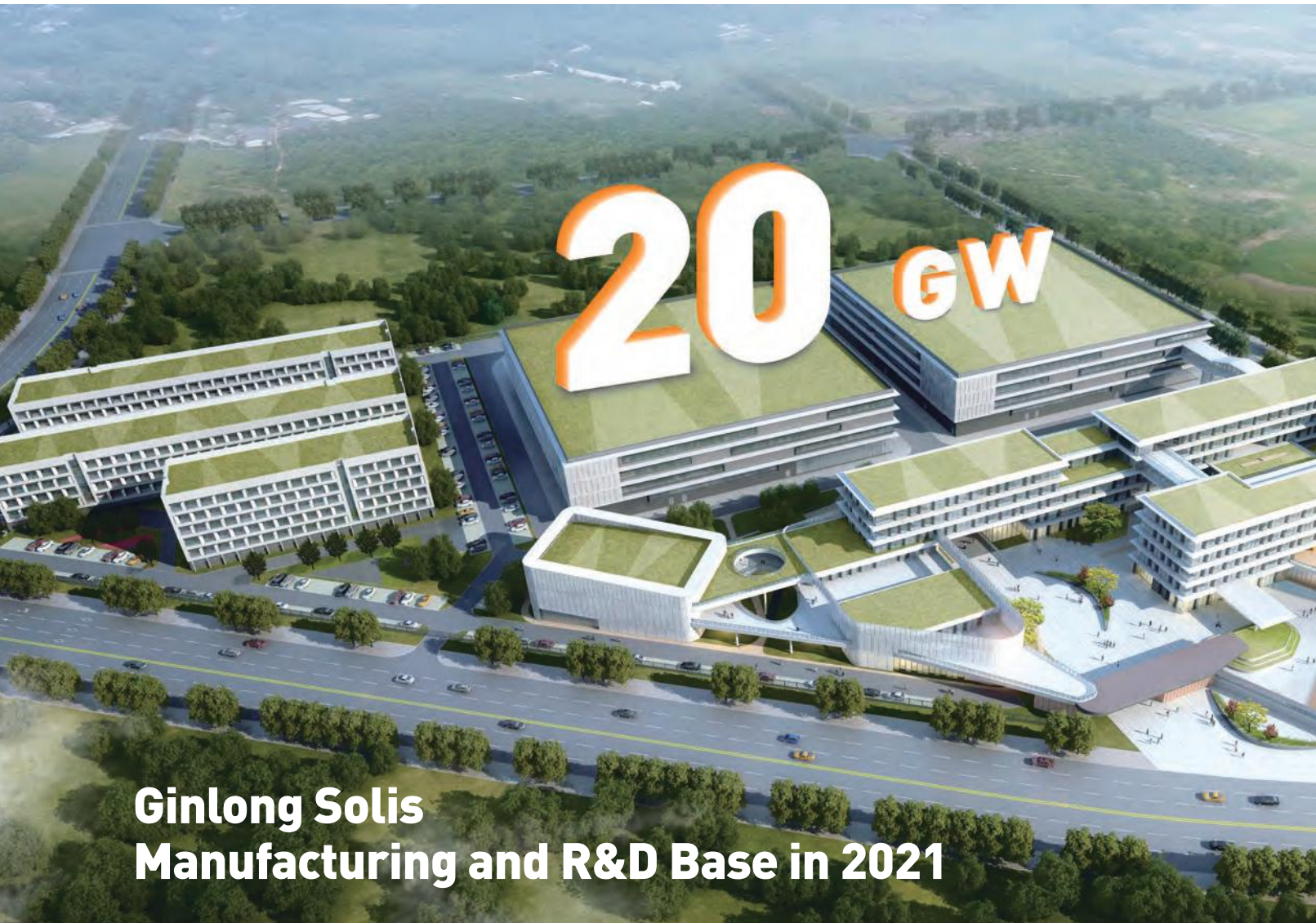


# Global string inverter manufacturer



Ginlong Technologies Co., Ltd.

Quality Experience Reliability



## Ginlong Solis Manufacturing and R&D Base in 2021

**15 years**

Founded in 2005

**11 years**

US since 2009

**1 years**

Went public in 2019



Top-of-range Lifespan Projection in String Inverter Category  
as Validated by DNV·GL.





## COMPANY PROFILE

Established in 2005, Ginlong Technologies (Stock Code: 300763.SZ) is one of most experienced and largest manufacturers of solar inverters.

Ginlong's cost-effective solutions for residential, commercial, and utility-scale users deliver value at every level of the solar supply chain, engaging both homeowners and businesses, as well as power producers and renewable energy investors across the globe.

Presented under the Solis brand, the company's solar inverter product line uses innovative string technology to deliver first-class reliability, validated under the most stringent international certifications.

Combining a global supply chain with world-class R&D and manufacturing capabilities, Ginlong optimizes its Solis inverters for each regional market, servicing and supporting its customers with its team of local experts.

Proven bankability has attracted support from world leading financial institutions, ensuring solid long-term returns on investment. Working with stakeholders to accelerate the worlds journey towards a more sustainable future.

**15 GW+**

Global installations

**100+**

Countries with Solis installations

**1500+**

Global Employees

**200+**

Engineers

**No.3**

Solis Ranked Third Among Asian Brands by BloombergNEF's Inverter Bankability in 2019.

 solis



# Company Milestones

2005	Ginlong Technologies established in Ningbo, China
2006	Second inverter certified to UK G83 certification
2009	First Asian inverter to achieve USA UL1741 certification
2010	Second Asian inverter certified to AS4777/AS 3100
2011	Ginlong hosted IEC61400 second annual meeting
2015	Ginlong inverter installed on the Eiffel Tower in Paris
2015	Achieved top 12 inverter sales ranking in Europe
2016	Listed by Asia PV innovation
2016	Awarded Best Distribution Inverter Brand by PVBL
2016	Certified to ISO 9001:2015 Standard
2016	Certified to ISO 14001:2015 Standard
2015 & 2016	Earned third place ranking in China PV string inverter brand value
2017	Certified to OHSAS 18001:2007 Standard
2017	Three-phase string inverters ranked 4th in global market shares (GTM)
2018	Single-phase string inverters ranked 2nd in global market shares (GTM)
2017 & 2018	Granted prestigious APVIA Technology Achievement Award
2016, 2017 & 2018	Energy storage hybrid inverters ranked 3rd in Chinese market
2015, 2016, 2017, 2018 & 2019	Earned first place ranking in UK distribution PV inverter market
2016, 2017, 2018 & 2019	Awarded Top Brand PV inverters by EuPD Research
2019	Ginlong (Solis) listed as a Public Company
2019	Ginlong (Solis) Ranked Third among Asian Brands by BloombergNEF Bankability
2020	Ginlong Solis won PVBL 2019 Annual Top Global PV Brand Award





## Vertical-integrated Manufacturing for Quality and Reliability



We manage every aspect of manufacturing with state-of-the-art automation, fastidious inspections and rigorous testing, ensuring industry-leading quality and reliability. Our in-house Surface mount technology circuit board production is unique in the industry, guaranteeing quality and streamlining product innovation in response to customer needs.

---

## Best-in-Class Component Partners

Capacitors, Inductors



Connectors, Switching Devices



Materials, IC Categories



Power Devices, Sensors



## Global Sales and Service Infrastructure



### Service Offices

- U.S.A.
- Australia
- China
- South Africa
- UK
- Netherlands
- Mexico
- Spain
- India
- Romania
- Brazil

### Expert Local Customer Service

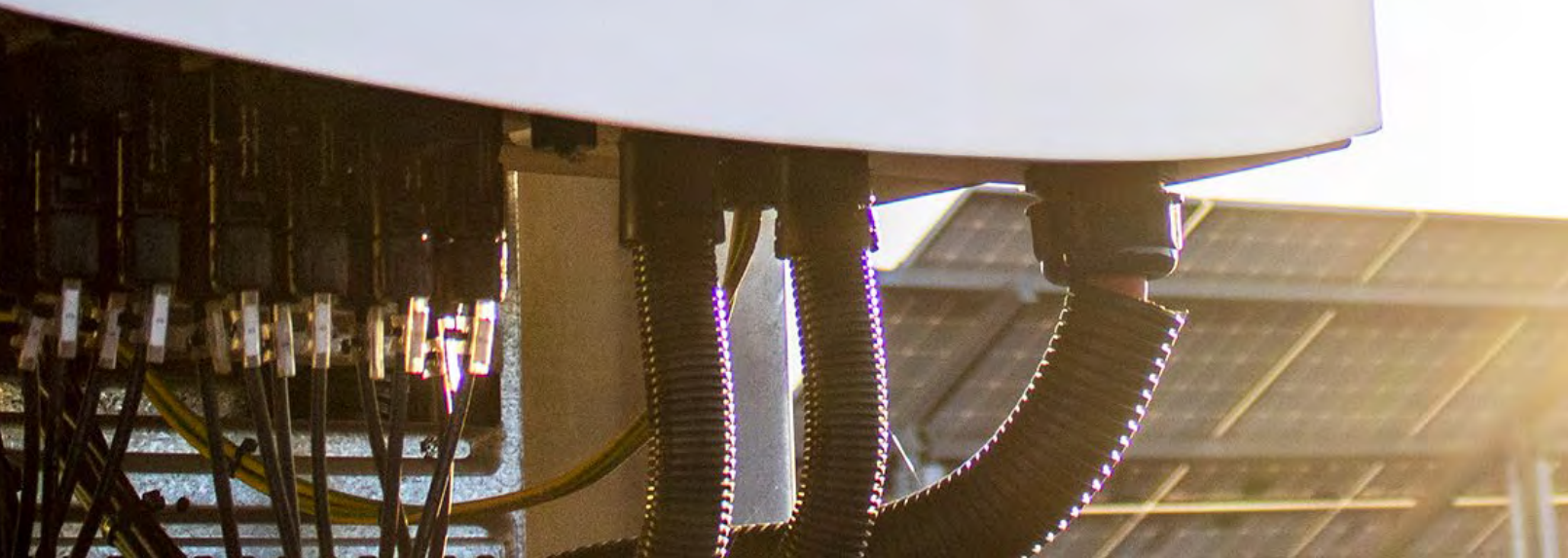
- Unmatched experience across a global network
- Reliable local services
- Global technical support available







 solis



# CONTENTS

Solis Single Phase US Inverters 01

Solis Three Phase US Inverters 05

Solis PV Storage Inverter 19

Accessories 21

Case study 27



# Solis-1P(3.6-5)K-4G-US

## Solis Single Phase US Inverters



### Features:

- ▶ Max. efficiency 98.1% (CEC efficiency 97.3%)
- ▶ CA Rule 21 compliant and UL 1741 SA Certified
- ▶ Sunspec communication protocol with optional cellular and Wi-Fi interface
- ▶ Built-in Sunspec certified module level rapid shutdown transmitter
- ▶ Optional built-in revenue grade meter, ANSI C12.20-2010 compliance
- ▶ Fast and dynamic MPPTs and industry-leading DC voltage range
- ▶ Integrated Arc Fault Circuit Interrupt (AFCI)
- ▶ 10 years standard warranty with extension options

### Model:

- Solis-1P3.6K-4G-US
- Solis-1P5K-4G-US



### Ordering: Solis-1P(3.6-5)K-4G-US-AFCI

- SPRT (SunSpec MLRSD Transmitter)
- RGM-SPRT (Revenue Grade Meter and Transmitter)

## Datasheet

Model Name	Solis-1P3.6K-4G-US	Solis-1P5K-4G-US
<b>Input DC</b>		
Recommended max. PV power	4000W	6000W
Max. input voltage	600V	
Rated voltage	330V	
Start-up voltage	120V	
MPPT voltage range	90-520V	
Max. input current	11A/11A	
Max. short circuit current	17.2A/17.2A	
MPPT number/Max. input strings number	2/2	
<b>Output AC</b>		
Rated output power	3600W	5000W
Max. apparent output power	3600VA	5000VA
Max. output power	3600W	5000W
Rated grid voltage	1Φ/PE, 240/208V	
Rated grid frequency	60Hz	
Max. output current for 240V grid	15.0A	20.8A
Max. output current for 208V grid	17.3A	24.0A
Power Factor	>0.99 (0.8 leading - 0.8 lagging)	
THDi	<3%	
<b>Efficiency</b>		
Max. efficiency	97.8%	98.1%
CEC efficiency	97.1%	97.3%
<b>Protection</b>		
DC reverse-polarity protection	Yes	
Ground fault monitoring	Yes	
Anti-islanding protection	Yes	
Integrated AFCI (DC arc-fault circuit protection)	Yes	
Integrated DC switch	Yes	
Rapid shutdown	Built-In Certified Sunspec or Tigo Transmitter	
Compliant MLRSD Products	TS4-A-F/2F, RSD-PFK, APSmart RSD-S-PLC	
<b>General Data</b>		
Dimensions (W*H*D)	13.9*31.9*6.5 in (353*810*165 mm)	
Weight	33.1 lbs (15 kgs)	
Topology	Transformerless	
Self consumption	<1W (night)	
Relative humidity	0-100%	
Operating ambient temperature range	-13°F to 140°F (-25°C to 60°C)	
Storage environment	-13°F to 176°F (-25°C to 80°C)	
Ingress protection	NEMA 4X	
Cooling concept	Natural convection	
Max. operation altitude	13,120 ft (4000 m)	
Compliance	UL 1741, IEEE 1547, IEEE 1547a, IEEE 1547.1, IEEE 1547.1a, UL 1699B, UL 1998, Rule 21 phase I,II&III	
<b>Features</b>		
DC connection	1 knockout for 3/4" conduit at bottom, side and back, Screw clamp terminal	
AC connection	1 knockout for 3/4" conduit at bottom, side and back, OT terminal	
Display	LCD	
Communication	RS485, Optional: Cellular, Wi-Fi	

# Solis-1P(6-10)K-4G-US

## Solis Single Phase US Inverters



### Features:

- ▶ Max. efficiency 97.8% (CEC efficiency 97.5%)
- ▶ CA Rule 21 compliant and UL 1741 SA Certified
- ▶ protocol with optional cellular and Wi-Fi interface
- ▶ Built-in Sunspec certified module level rapid shutdown transmitter
- ▶ Optional Built-in Revenue Grade Meter, ANSI C12.20-2010 compliance
- ▶ Industry-leading 3 and 4 MPPT designs
- ▶ Integrated Arc Fault Circuit Interrupt (AFCI)
- ▶ 10 years standard warranty with extension options

### Model:

Solis-1P6K-4G-US  
Solis-1P7.6K-4G-US  
Solis-1P9K-4G-US  
Solis-1P10K-4G-US



### Ordering: Solis-1P(7.6-10)K-4G-US-AFCI

- SPRT (SunSpec MLRSD Transmitter)
- RGM-SPRT (Revenue Grade Meter and Transmitter)



## Datasheet

Model Name	Solis-1P6K-4G-US	Solis-1P7.6K-4G-US	Solis-1P9K-4G-US	Solis-1P10K-4G-US
------------	------------------	--------------------	------------------	-------------------

### Input DC

Recommended max. PV power	7200W	9100W	10800W	11500W
Max. input voltage	600V			
Rated voltage	330V			
Start-up voltage	120V			
MPPT voltage range	100-500V			
Max. input current	10A/10A/10A		4*10A	
Max. short circuit current	15.6A/15.6A/15.6A		4*15.6A	
MPPT number/Max. input strings number	3/3		4/4	

### Output AC

Rated output power	6000W	7600W	9000W	10000W
Max. apparent output power	6000VA	7600VA	9000VA	10000VA
Max. output power	6000W	7600W	9000W	10000W
Rated grid voltage	1Φ/PE, 240/208V			
Rated grid frequency	60Hz			
Max. output current for 240 V grid	25A	31.7A	37.5A	41.7A
Max. output current for 208 V grid	28.8A	36.5A	43.3A	43.3A
Power Factor	>0.99 (0.8 leading - 0.8 lagging)			
THDi	<3%			

### Efficiency

Max. efficiency	97.8%			
CEC efficiency	97.5%			

### Protection

DC reverse-polarity protection	Yes			
Ground fault monitoring	Yes			
Anti-islanding protection	Yes			
Integrated AFCI (DC arc-fault circuit protection)	Yes			
Integrated DC switch	Yes			
Rapid shutdown	Built-In Certified Sunspec or Tigo Transmitter			
Compliant MLRSD Products	TS4-A-F/2F, RSD-PFK, APSmart RSD-S-PLC			

### General Data

Dimensions (W*H*D)	13.1*28.8*9.8 in (333*732*249 mm)			
Weight	45.2 lbs (20.5 kgs)		45.6 lbs (20.7 kgs)	
Topology	Transformerless			
Self consumption	<1W (night)			
Relative humidity	0-100%			
Operating ambient temperature range	-13°F to 140°F (-25°C to 60°C)			
Storage environment	-13°F to 176°F (-25°C to 80°C)			
Ingress protection	NEMA 4X			
Cooling concept	Natural convection			
Max. operation altitude	13,120 ft (4000 m)			
Compliance	UL 1741, IEEE 1547, IEEE 1547a, IEEE 1547.1, IEEE 1547.1a, UL 1699B, UL 1998, Rule 21 phase I,II&III			

### Features

DC connection	2 knockout for 1"conduit at bottom, 4 knockout for 3/4"conduit at side and back, Screw clamp terminal			
AC connection	2 knockout for 1"conduit at bottom, 4 knockout for 3/4"conduit at side and back, OT terminal			
Display	LCD			
Communication	RS485, Optional: Cellular, Wi-Fi			

# Solis-(25-40)K-US-SW

## Solis Three Phase US Inverters



### Features:

- ▶ Max. efficiency 98.6% (CEC efficiency 98.3%) with ultra-low start-up voltage
- ▶ Compact and lightweight design inside a corrosion-resistant NEMA 4X enclosure
- ▶ Designed for all commercial, industrial, and utility-scale applications
- ▶ Transformer-less three phase design with 480 Vac output
- ▶ Wide voltage range and low startup voltage
- ▶ Industry-leading 4 MPPT designs with fast (<5 sec) MPPT response times
- ▶ Integrated Arc Fault Circuit Interrupt (AFCI) option
- ▶ RS-485 Modbus communication protocol with Wi-Fi interface
- ▶ 7" LCD color display
- ▶ Web-based data monitoring with downloadable Solis Mobile App
- ▶ 10 years standard warranty with extension options



### Model:

Solis-25K-US-SW	Solis-30K-US-SW
Solis-36K-US-SW	Solis-40K-US-SW

## Datasheet

Model Name	Solis-25K-US-SW	Solis-30K-US-SW	Solis-36K-US-SW	Solis-40K-US-SW
<b>Input DC</b>				
Recommended max. PV power	37500W	45000W	54000W	54000W
Max. input voltage	1000V			
Rated voltage	700V			
Start-up voltage	350V			
MPPT voltage range	200-800V			
Max. input current	4*18A			
Max. short circuit current	4*28.1A			
MPPT number/Max. input strings number	4/8			
<b>Output AC</b>				
Rated output power	25000W	30000W	36000W	40000W
Max. apparent output power	25000VA	30000VA	36000VA	40000VA
Max. output power	25000W	30000W	36000W	40000W
Rated grid voltage	3Φ/PE, 480V			
Rated grid frequency	60Hz			
Max. output current	30.1A	36.1A	43.3A	48.1A
Power Factor	>0.99 (0.8 leading - 0.8 lagging)			
THDi	<3%			
<b>Efficiency</b>				
Max. efficiency	98.6%			
CEC efficiency	98.3%			
<b>Protection</b>				
DC reverse-polarity protection	Yes			
Ground fault monitoring	Yes			
Anti-islanding protection	Yes			
Integrated AFCI (DC arc-fault circuit protection)	Yes			
Integrated DC switch	Yes			
<b>General Data</b>				
Dimensions (W*H*D)	21.1*38.0*14.1 in (535*966*358 mm)			
Weight	127 lbs (57.7 kgs)/22.8 lbs (10.3 kgs)			
Topology	Transformerless			
Self consumption	<1W (night)			
Relative humidity	0-100%			
Operating ambient temperature range	-13 °F to 140 °F (-25°C to 60°C)			
Storage environment	-13 °F to 176 °F (-25°C to 80°C)			
Ingress protection	NEMA 4X			
Cooling concept	Natural convection			
Max. operation altitude	13,120 ft (4000 m)			
Compliance	UL 1741, IEEE 1547, IEEE 1547a, IEEE 1547.1, IEEE 1547.1a, UL 1699B, UL 1998, Rule 21 phase I,II&III			
<b>Features</b>				
DC connection	4 knockout for 1.5" conduit at bottom and side, Fuse screw terminal (Copper 12-6AWG)			
AC connection	4 knockout for 1.5" conduit at bottom and side, terminal block, OT terminal (Copper or aluminum 8-2AWG), Aluminum requires bi-metallic compatible terminal			
Display	7.0"LCD color screen display			
Communication	Modbus RTU (Sunspec compliant), RS485, Optional: Cellular, Wi-Fi			



# Solis-(25-40)K-US-LSW

## Solis Three Phase US Inverters



### Features:

- ▶ Max. efficiency 98.6% (CEC efficiency 98.3%) with ultra-low start-up voltage
- ▶ Compact and lightweight design inside a corrosion-resistant NEMA 4X enclosure
- ▶ Designed for all commercial, industrial, and utility-scale applications
- ▶ Built-in Sunspec certified module level rapid shutdown transmitter
- ▶ Transformer-less three phase design with 480 Vac output
- ▶ Wide voltage range and low startup voltage
- ▶ Industry-leading 4 MPPT designs with fast (<5 sec) MPPT response times
- ▶ Integrated Arc Fault Circuit Interrupt (AFCI) option
- ▶ RS-485 Modbus communication protocol with Wi-Fi interface
- ▶ 7" LCD color display
- ▶ Web-based data monitoring with downloadable Solis Mobile App
- ▶ 10 years standard warranty with extension options



### Model:

- |                  |                  |
|------------------|------------------|
| Solis-25K-US-LSW | Solis-30K-US-LSW |
| Solis-36K-US-LSW | Solis-40K-US-LSW |

## Datasheet

Model Name	Solis-25K-US-LSW	Solis-30K-US-LSW	Solis-36K-US-LSW	Solis-40K-US-LSW
<b>Input DC</b>				
Recommended max. PV power	37500W	45000W	54000W	54000W
Max. input voltage	1000V			
Rated voltage	700V			
Start-up voltage	350V			
MPPT voltage range	200-800V			
Max. input current	4*18A			
Max. short circuit current	4*28.1A			
MPPT number/Max. input strings number	4/8			
<b>Output AC</b>				
Rated output power	25000W	30000W	36000W	40000W
Max. apparent output power	25000VA	30000VA	36000VA	40000VA
Max. output power	25000W	30000W	36000W	40000W
Rated grid voltage	3Φ/PE, 480V			
Rated grid frequency	60Hz			
Max. output current	30.1A	36.1A	43.3A	48.1A
Power Factor	>0.99 (0.8 leading - 0.8 lagging)			
THDi	<3%			
<b>Efficiency</b>				
Max. efficiency	98.6%			
CEC efficiency	98.3%			
<b>Protection</b>				
DC reverse-polarity protection	Yes			
Ground fault monitoring	Yes			
Anti-islanding protection	Yes			
Integrated AFCI (DC arc-fault circuit protection)	Yes			
Integrated DC switch	Yes			
Rapid shutdown	Built-In Certified Sunspec or Tigo Transmitter			
<b>General Data</b>				
Dimensions (W*H*D)	21.1*45.9*14.1 in (535*1167*358 mm)			
Weight	127 lbs (57.7 kgs)/26.5 lbs (12kgs)			
Topology	Transformerless			
Self consumption	<1W (night)			
Relative humidity	0-100%			
Operating ambient temperature range	-13 °F to 140 °F (-25°C to 60°C)			
Storage environment	-13 °F to 176 °F (-25°C to 80°C)			
Ingress protection	NEMA 4X			
Cooling concept	Natural convection			
Max. operation altitude	13,120 ft (4000 m)			
Compliance	UL 1741, IEEE 1547, IEEE 1547a, IEEE 1547.1, IEEE 1547.1a, UL 1699B, UL 1998, Rule 21 phase I,II&III			
<b>Features</b>				
DC connection	4 knockout for 1.5" conduit at bottom and side, Fuse screw terminal (Copper 12-6AWG)			
AC connection	4 knockout for 1.5" conduit at bottom and side, terminal block, OT terminal (Copper or aluminum 8-2AWG), Aluminum requires bi-metallic compatible terminal			
Display	7.0"LCD color screen display			
Communication	Modbus RTU (Sunspec compliant), RS485, Optional: Cellular, Wi-Fi			

# Solis-(50-66)K-US-SW

## Solis Three Phase US Inverters



### Features:

- ▶ Max. efficiency 98.8% (CEC efficiency 98.4%) with ultra-low start up voltage
- ▶ Compact and lightweight design inside a corrosion-resistant NEMA 4X enclosure
- ▶ Designed for all commercial, industrial, and utility-scale applications
- ▶ Transformer-less three phase design with 480 Vac output
- ▶ Wide voltage range and low startup voltage
- ▶ Industry-leading 4 MPPT designs with fast (<5 sec.) MPPT response times
- ▶ Integrated Arc Fault Circuit Interrupt (AFCI) option
- ▶ RS-485 Modbus communication protocol with Wi-Fi interface
- ▶ Web-based data monitoring with downloadable Solis Mobile App
- ▶ 10 years standard warranty with extension options



### Model:

Solis-50K-US-F-SW Solis-60K-US-F-SW  
Solis-66K-US-F-SW

## Datasheet

Model Name	Solis-50K-US-F-SW	Solis-60K-US-F-SW	Solis-66K-US-F-SW
------------	-------------------	-------------------	-------------------

### Input DC

Recommended max. PV power	75000W	90000W	90000W
Max. input voltage		1000V	
Rated voltage		720V	
Start-up voltage		200V	
MPPT voltage range		200-850V	
Max. input current		4*28.5A	
Max. short circuit current		4*55A	
MPPT number/Max. input strings number		4/16	

### Output AC

Rated output power	50000W	60000W	66000W
Max. apparent output power	50000VA	60000VA	66000VA
Max. output power	50000W	60000W	66000W
Rated grid voltage		3Φ/PE, 480V	
Rated grid frequency		60Hz	
Max. output current	60.2A	72.2A	79.4A
Power Factor		>0.99 (0.8 leading - 0.8 lagging)	
THDi		<3%	

### Efficiency

Max. efficiency		98.8%	
CEC efficiency		98.4%	

### Protection

DC reverse-polarity protection		Yes	
Ground fault monitoring		Yes	
Anti-islanding protection		Yes	
Integrated AFCI (DC arc-fault circuit protection)		Yes	
Integrated DC switch		Yes	

### General Data

Dimensions (W*H*D)		24.9*40.4*14.7 in (633*1027*374 mm)	
Weight (inverter/wiring box)		147 lbs (66.7 kgs)/35.4 lbs (16 kgs)	
Topology		Transformerless	
Self consumption		<1W (night)	
Relative humidity		0-100%	
Operating ambient temperature range		-13°F to 140°F (-25°C to 60°C)	
Storage environment		-13°F to 176°F (-25°C to 80°C)	
Ingress protection		NEMA 4X	
Cooling concept		Intelligent redundant fan-cooling	
Max. operation altitude		13,120 ft (4000 m)	
Compliance		UL 1741, UL 1741SA, UL 1998, UL 1699B, IEEA 1547, FCC Part 15 (Class A & B), CAN/CSA C22.2 107.1-1, Rule 21 phase I,II&III	

### Features

DC connection		4 knockout for 2" conduit at bottom and side, Fuse screw terminal (Copper 12-6AWG)	
AC connection		"4 knockout for 2" conduit at bottom and side, OT terminal (Copper or aluminum 8-2AWG) Aluminum requires bi-metallic compatible terminal	
Display		LCD	
Communication		Modbus RTU (Sunspec compliant), RS485, Optional: Cellular, Wi-Fi	



# Solis-(50-66)K-US-F-LSW

## Solis Three Phase US Inverters



### Features:

- ▶ Max. efficiency 98.8% (CEC efficiency 98.4%) with ultra-low start up voltage
- ▶ Compact and lightweight design inside a corrosion-resistant NEMA 4X enclosure
- ▶ Designed for all commercial, industrial, and utility-scale applications
- ▶ Built-in Sunspec certified module level rapid shutdown transmitter
- ▶ Transformer-less three phase design with 480 Vac output
- ▶ Wide voltage range and low startup voltage
- ▶ Industry-leading 4 MPPT designs with fast (<5 sec.) MPPT response times
- ▶ Integrated Arc Fault Circuit Interrupt (AFCI) option
- ▶ RS-485 Modbus communication protocol with Wi-Fi interface
- ▶ Web-based data monitoring with downloadable Solis Mobile App
- ▶ 10 years standard warranty with extension options



### Model:

Solis-50K-US-F-LSW    Solis-60K-US-F-LSW  
Solis-66K-US-F-LSW

## Datasheet

Model Name	Solis-50K-US-F-LSW	Solis-60K-US-F-LSW	Solis-66K-US-F-LSW
<b>Input DC</b>			
Recommended max. PV power	75000W	90000W	90000W
Max. input voltage		1000V	
Rated voltage		720V	
Start-up voltage		200V	
MPPT voltage range		200-850V	
Max. input current		4*28.5A	
Max. short circuit current		4*55A	
MPPT number/Max. input strings number		4/16	
<b>Output AC</b>			
Rated output power	50000W	60000W	66000W
Max. apparent output power	50000VA	60000VA	66000VA
Max. output power	50000W	60000W	66000W
Rated grid voltage		3Φ/PE, 480V	
Rated grid frequency		60Hz	
Max. output current	60.2A	72.2A	79.4A
Power Factor		>0.99 (0.8 leading - 0.8 lagging)	
THDi		<3%	
<b>Efficiency</b>			
Max. efficiency		98.8%	
CEC efficiency		98.4%	
<b>Protection</b>			
DC reverse-polarity protection		Yes	
Ground fault monitoring		Yes	
Anti-islanding protection		Yes	
Integrated AFCI (DC arc-fault circuit protection)		Yes	
Integrated DC switch		Yes	
Rapid shutdown		Built-In Certified Sunspec or Tigo Transmitter	
<b>General Data</b>			
Dimensions (W*H*D)		24.9*47.5*14.7 in (633*1206*374 mm)	
Weight (inverter/wiring box)		147 lbs (66.7 kgs)/43.4 lbs (19.7 kgs)	
Topology		Transformerless	
Self consumption		<1W (night)	
Relative humidity		0-100%	
Operating ambient temperature range		-13°F to 140°F (-25°C to 60°C)	
Storage environment		-13°F to 176°F (-25°C to 80°C)	
Ingress protection		NEMA 4X	
Cooling concept		Intelligent redundant fan-cooling	
Max. operation altitude		13,120 ft (4000 m)	
Compliance		UL 1741, UL 1741SA, UL 1998, UL 1699B, IEEE 1547, FCC Part 15 (Class A & B), CAN/CSA C22.2 107.1-1, Rule 21 phase I,II&III	
<b>Features</b>			
DC connection		4 knockout for 2" conduit at bottom and side, Fuse screw terminal (Copper 12-6AWG)	
AC connection		4 knockout for 2" conduit at bottom and side, OT terminal (Copper or aluminum 8-2AWG) Aluminum requires bi-metallic compatible terminal"	
Display		LCD	
Communication		Modbus RTU (Sunspec compliant), RS485, Optional: Cellular, Wi-Fi	

# Solis-(75-100)K-5G-US

## Solis Three Phase US Inverters



### Model:

**480V:** Solis-75K-5G-US   Solis-80K-5G-US   Solis-90K-5G-US   Solis-100K-5G-US



#### Efficient

- ▶ 8/9/10 MPPTs, max. efficiency 99% (CEC efficiency 98.5%)
- ▶ > 150% DC/AC ratio
- ▶ Compatible with bifacial modules



#### Safe

- ▶ IP66
- ▶ CA Rule 21 compliant and UL 1741 SA Certified
- ▶ Built-in PID recovery for better module performance
- ▶ Globally recognised branded component for longer life



#### Smart

- ▶ Night SVG function
- ▶ Intelligent string monitoring. Smart I-V curve scan
- ▶ Remote firmware upgrade with simple operation



#### Economic

- ▶ Power line communication (PLC) (optional)
- ▶ Support "Y" type connection in DC side
- ▶ Support aluminium wire access to reduce cost

## Datasheet

Model Name	Solis-75K-5G-US	Solis-80K-5G-US	Solis-90K-5G-US	Solis-100K-5G-US
------------	-----------------	-----------------	-----------------	------------------

### Input DC

Max. input voltage	1000V			
Rated voltage	600V			
Start-up voltage	195V			
MPPT voltage range	180-1000V			
Max. input current	8*26A	9*26A	10*26A	
Max. short circuit current	8*40A	9*40A	10*40A	
MPPT number/Max. input strings number	8/16	9/18	10/20	

### Output AC

Rated output power	75000W	80000W	90000W	100000W
Max. apparent output power	75000VA	80000VA	90000VA	100000VA
Max. output power	75000W	80000W	90000W	100000W
Rated grid voltage	3Φ/PE, 480V			
Rated grid frequency	60Hz			
Max. output current	90.2A	96.2A	108.3A	120.3A
Power Factor	>0.99 (0.8 leading - 0.8 lagging)			
THDi	<3%			

### Efficiency

Max. efficiency	98.7%		99.0%	
CEC efficiency	98.3%		98.5%	

### Protection

DC reverse-polarity protection	Yes			
Ground fault monitoring	Yes			
Anti-islanding protection	Yes			
Integrated AFCI (DC arc-fault circuit protection)	Yes			
Strings monitoring	Yes			
I/V Curve scanning	Yes			
Anti-PID function	Yes			
Rapid shutdown	Optional			
AC switch	Optional			

### General Data

Dimensions(W*H*D)	41.9*22.3*13.6 in (1065*567*344.5 mm)			
Weight	187 lbs (85 kgs)			
Topology	Transformerless			
Self consumption	<2W (night)			
Relative humidity	0-100%			
Operating ambient temperature range	-13°F~140°F (-25°C~60°C)			
Storage environment	-40°F~176°F (-40°C~80°C)			
Ingress protection	NEMA 4X			
Cooling concept	Intelligent redundant fan-cooling			
Max. operation altitude	13,120 ft (4000 m)			
Compliance	UL 1741, UL 1741SA, UL 1998, UL 1699B, IEEE 1547, FCC Part 15 (Class A & B), CAN/CSA C22.2 107.1-1, Rule 21 phase I,II&III			

### Features

DC connection	MC4 connector			
AC connection	OT Terminal (max 185 mm <sup>2</sup> )			
Display	LCD			
Communication	RS485, Optional: Wi-Fi, Cellular, Ethernet, PLC			



# Solis-125K-EHV-5G

Solis Three Phase US Inverters



## Model:

600V: Solis-125K-EHV-5G



### Efficient

- ▶ Max. efficiency 99.1% (CEC efficiency 98.6%)
- ▶ > 150% DC/AC ratio
- ▶ Compatible with bifacial modules



### Safe

- ▶ Built-in PID recovery for better module performance (optional)
- ▶ Equipped with AC/DC switch, safe and convenient maintenance
- ▶ Globally recognised branded componentry for longer life



### Smart

- ▶ Strong reactive power compensation
- ▶ Multiple communication modes applicable to various scenarios
- ▶ Remote firmware upgrade with simple operation



### Economic

- ▶ Max. DC input voltage: 1500V
- ▶ Supports aluminium wire access to reduce cost

## Datasheet

Model Name	Solis-125K-EHV-5G
------------	-------------------

### Input DC

Max. input voltage	1500V
Rated voltage	950V
Start-up voltage	900V
MPPT voltage range	860-1450V
Max. input current	150A
Max. short circuit current	300A
MPPT number/Max. input strings number	1/20

### Output AC

Rated output power	125000W
Max. apparent output power	125000VA
Max. output power	125000W
Rated grid voltage	3Φ/PE, 600V
Rated grid frequency	60Hz
Max. output current	120.3A
Power Factor	>0.99 (0.8 leading - 0.8 lagging)
THDi	<3%

### Efficiency

Max. efficiency	99.1%
CEC efficiency	98.6%

### Protection

DC reverse-polarity protection	Yes
Short circuit protection	Yes
Output over current protection	Yes
Surge protection	DC Type II / AC Type II
Grid monitoring	Yes
Anti-islanding protection	Yes
Temperature protection	Yes
Strings monitoring	Yes
I/V Curve scanning	Yes
Integrated DC switch	Yes
Integrated AC switch	Yes

### General Data

Dimensions (W*H*D)	46.3*28.1*12.4 in (1178*713.5*315 mm)
Weight	185.2 lbs (84 kgs)
Topology	Transformerless
Self consumption	<3W (night)
Relative humidity	0-100%
Operating ambient temperature range	-13°F to 140°F (-25°C to 60°C)
Storage environment	-13°F to 176°F (-25°C to 80°C)
Ingress protection	NEMA 4X
Cooling concept	Intelligent redundant fan-cooling
Max. operation altitude	13,120 ft (4000 m)
Compliance	UL 1741, UL 1741SA, UL 1998, UL 1699B, IEEE 1547, FCC Part 15 (Class A & B), CAN/CSA C22.2 107.1-1, Rule 21 phase I,II&III

### Features

DC connection	MC4 connector
AC connection	OT terminal (max. 185 mm <sup>2</sup> )
Display	LCD
Communication	RS485, Optional: Wi-Fi, Cellular, Ethernet

# Solis-(185-255)K-EHV-5G-US

## Solis Three Phase US Inverters



### Model:

**600V:** Solis-185K-EHV-5G-US    **800V:** Solis-255K-EHV-5G-US



#### Efficient

- ▶ 14 MPPTs, max. efficiency 99% (CEC efficiency 98.5%)
- ▶ 200% DC/AC ratio
- ▶ High power tracking density 60MPPT/MW
- ▶ Compatible with bifacial modules



#### Smart

- ▶ Night SVG function
- ▶ Intelligent string monitoring. Smart I-V curve scan
- ▶ Remote firmware upgrade with simple operation



#### Safe

- ▶ IP66
- ▶ Built-in PID recovery for better module performance
- ▶ Fuse free design, safe and maintenance free
- ▶ Globally recognised branded componentry for longer life



#### Economic

- ▶ Power line communication (PLC) (optional)
- ▶ Support "Y" type connection in DC side
- ▶ Support aluminium wire access to reduce cost
- ▶ Reserve DC energy storage access



## Datasheet

Model Name	Solis-185K-EHV-5G-US	Solis-255K-EHV-5G-US
------------	----------------------	----------------------

### Input DC

Max. input voltage	1500V	
Rated voltage	950V	1080V
Start-up voltage	600V	
MPPT voltage range	580-1500V	
Max. input current	14*26A	
Max. short circuit current	14*40A	
MPPT number/Max. input strings number	14/28	

### Output AC

Rated output power	185000W	255000W
Max. apparent output power	185000VA	255000VA
Max. output power	185000W	255000W
Rated grid voltage	3Φ/PE, 600V	3Φ/PE, 800V
Rated grid frequency	60Hz	
Max. output current	178.0A	184.0A
Power Factor	>0.99 (0.8 leading - 0.8 lagging)	
THDi	<3%	

### Efficiency

Max. efficiency	99.0%
CEC efficiency	98.5%

### Protection

DC reverse-polarity protection	Yes
Ground fault monitoring	Yes
Anti-islanding protection	Yes
Strings monitoring	Yes
I/V Curve scanning	Yes
Anti-PID function	Yes

### General Data

Dimensions (W*H*D)	46.0*30.3*15.1 in (1170*770*384 mm)
Weight	249.0 lbs (113 kgs)
Topology	Transformerless
Self consumption	<2W (night)
Relative humidity	0-100%
Ambient operating temperature range	-13°F to 140°F (-25°C ~ +60°C)
Storage environment	-40°F to 176°F (-40°C to 80°C)
Ingress protection	NEMA 4X
Cooling concept	Intelligent redundant fan-cooling
Max. operation altitude	13,120 ft (4000 m)
Compliance	UL 1741, UL 1741SA, UL 1998, IEEE 1547, FCC Part 15 (Class A & B), CAN/CSA C22.2 107.1-1, Rule 21 phase I,II&III

### Features

DC connection	MC4 connector
AC connection	OT terminal (max. 300 mm <sup>2</sup> )
Display	LCD
Communication	RS485, Optional: PLC

# RHI-1P(5-10)K-HVES-5G

## Solis PV Storage Inverter



### Model:

RHI-1P5K-HVES-5G   RHI-1P6K-HVES-5G   RHI-1P7.6K-HVES-5G  
 RHI-1P9K-HVES-5G   RHI-1P10K-HVES-5G

### Features:

- ▶ Top-of-class 98% efficiency (CEC efficiency 97.5%)
- ▶ Dynamic MPPTs (2 MPPTs w/ 4 DC inputs)
- ▶ 3 operating modes: self-consumption; time-of-use; off-grid backup
- ▶ Compatible with LG and BYD High Voltage Li-Ion batteries
- ▶ High DC to AC ratio of 1.4
- ▶ Rule 21 and HECO Compliant
- ▶ Built-in Sunspec MLRSD signal transmitter
- ▶ Ready for NEC 2017-2020
- ▶ Sealed enclosure with built-in AC/DC wiring box and ATS
- ▶ Large color LCD for easy programming
- ▶ 24-hour intelligent energy management system



### Ordering: RHI-1P(5-10)K-HVES-5G-DC-Meter

- SPRT (SunSpec MLRSD Transmitter)
- RGM-SPRT (Revenue Grade Meter and Transmitter)

## Datasheet

Model Name	RHI-1P5K-HVES-5G	RHI-1P6K-HVES-5G	RHI-1P7.6K-HVES-5G	RHI-1P9K-HVES-5G	RHI-1P10K-HVES-5G
<b>Input DC (PV side)</b>					
Max. input power	7000W	8400W	10600W	12600W	14000W
Max. input voltage			500V		
Rated voltage			330V		
Start-up voltage			120V		
MPPT voltage range			90-450V		
Max. input current			26A/26A		
Max. short circuit current			40A/40A		
MPPT number/Max. input strings number			2/4		
<b>Battery</b>					
Battery type			Li-ion		
Battery voltage range			120-500V		
Battery capacity			50-2000Ah		
Max. charging Power			7000W		
Max. charge/discharge current			20A		
Communication			CAN/RS485		
<b>Output AC (back-up)</b>					
Rated output power			6000W		
Max. apparent output power			7000W		
Back-up switch time			<10ms		
Rated output voltage (L-L)			240V		
Rated output voltage (L-N)*			120V		
Rated frequency			60Hz		
Rated output current			25A		
THDv			<3% (linear load)		
<b>Input AC (Grid side)</b>					
Input voltage range			190-280V		
Max. input current			48A		
Frequency range			45-55Hz/ 55-65Hz		
<b>Output AC (grid side)</b>					
Rated output power	5000W	6000W	7600W	9000W	10000W
Max. apparent output power	5000W	6000W	7600W	9000W	10000W
Operation phase			1Φ/PE		
Rated grid voltage			240V		
Rated grid frequency			60Hz		
Rating grid output current	24A/21A	28.8A/25A	36.5A/31.7A	43.3A/37.5A	48A/41.7A
Max. output current	40A/40A	40A/40A	40A/50A	50A/50A	60A/60A
Power Factor			>0.99 (0.8 leading - 0.8 lagging)		
THDi			<3%		
<b>Efficiency</b>					
Max. efficiency			98%		
CEC efficiency			97.5%		
<b>Protection</b>					
Ground fault monitoring			Yes		
Integrated AFCI (DC arc-fault circuit protection)			Yes		
DC reverse-polarity protection			Yes		
Rapid Shutdown NEC 2017			Built-in MLRSD Sunspec Transmitter		
Compliant MLRSD Products			TS4-A-F/2F, APsmart RSD-S-PLC		
Protection class/Over voltage category			I/II		
<b>General data</b>					
Dimensions (W*H*D)			20.2*28.1*8.18 in (539*717*250 mm)		
Weight			66.1 lbs (30 kgs)		
Topology			Transformerless		
Operating temperature range			-13°F to 140°F (-25°C to 60°C)		
Ingress protection			NEMA 4X		
Cooling concept			Natural convection		
Max. operation altitude			6,560 ft (2000 m)		
Grid connection standard			IEEE1547A, UL 1741-SA, ISO-NE, Rule 21		
Safety/EMC standard			UL 1741, UL1998, UL1699B, UL9540, CAN/CSA C22.2 107.1-1,FCC Part 15 Class B		
Compatible batteries			BYD B-Box H5.0/7.5/10, LG Chem RESU10H Type R		
<b>Features</b>					
DC connection			2 knockout for 1" conduit at side and bottom, Fuse screw terminal		
AC connection			3 knockout for 1" conduit at side and bottom, Screw clamp terminal (Max. 7 AWG)		
Display			7.0"LCD color screen display		
Communication			RS485, Optional: Wi-Fi, Cellular		

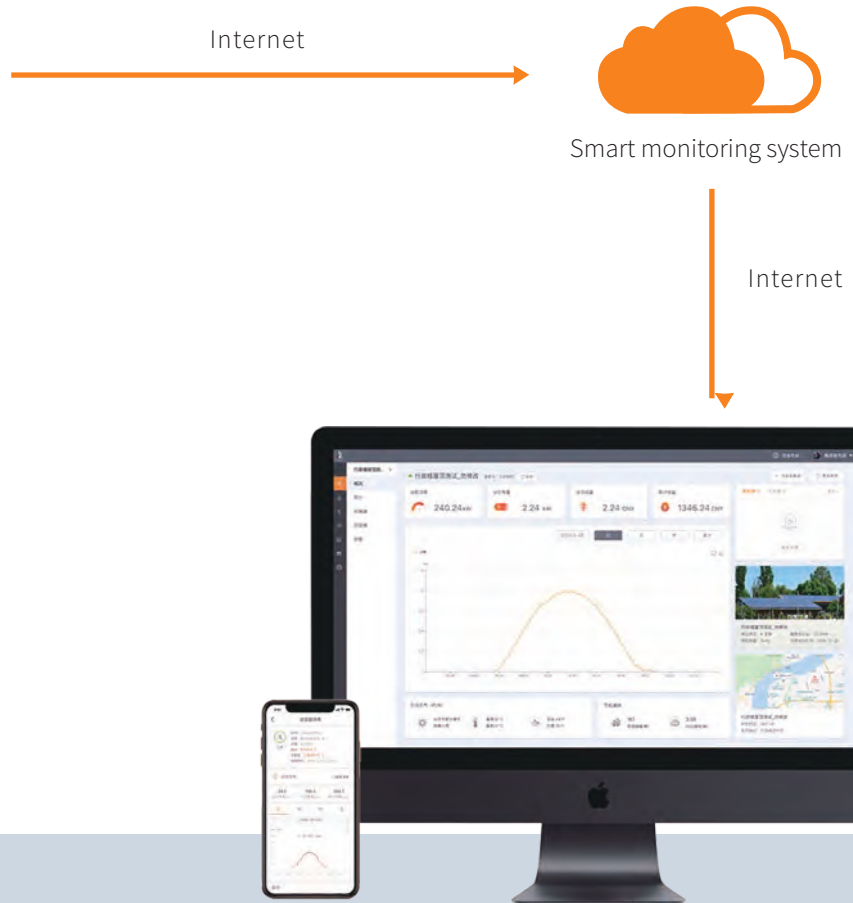
# Accessories

## Solis Data Logging Stick

### Ginlong Monitoring System



Data Logging Stick



Data Logging Stick  
Wi-Fi



Data Logging Stick  
LAN

#### Data Logging Stick: Wi-Fi

- Quick installation and easy operation enabling local and remote monitoring
- Mobile APP installation for Android and IOS
- Flexible outdoor rated Wi-Fi connection

#### Data Logging Stick: LAN

- Quick installation and easy operation
- Plug and play functionality
- Stable and reliable LAN connection



## Datasheet

Model Name	DLS-W(Wi-Fi)	DLS-L(LAN)
Max. number of inverters	1	
Inverter communication	4pin	
Remote communication	Wi-Fi (802.11 b/g/n)	Ethernet 10/100Mbps
Communication rate	9600 bps (adjustable:1200-57600 bps)	
Frequency	2.412GHz-2.484GHz	/
Wi-Fi communication range	100m in outdoor open area without obstruction	/
LAN communication range	/	50m (CAT-5e Shielded Twisted Pair)
Wi-Fi transmitting power	802.11b: +20dBm (Max) 802.11g: +18dBm (Max) 802.11n: +15dBm (Max) Configurable by users	/
Wi-Fi receiving sensitivity	802.11b: -89dBm 802.11g: -81dBm 802.11n: -71dBm	/
GPRS Mobile Station	/	/
Compatible with the GSM Phase 2/2 +	/	/
External antenna	I-PEX antenna	/
Data collection intervals	5 minutes (adjustable: 1-20 minutes)	
Data interface	RS485	
Preferences setting	Web Server	
Firmware updates	Wireless	Ethernet
Data access	Wi-Fi point-to-point/Remote server	Remote server
Data storage	8MBYTE FLASH	

### Electrical

Input voltage	DC 5V	DC 5V (+/-5%)
Working current	200mA-300mA	110mA-200mA
Static power consumption	/	/
Max. instantaneous power consumption	/	/

### Environmental

Operating temperature	-10 ~ +85°C	-10 ~ +85°C
Operating humidity	10%-90% Relative humidity, no condensa	
Storage temperature	-40 ~ +125°C	-40 ~ +125°C
Storage humidity	<40%	
Protection class	IP65	

### General Data

Dimensions (L*W*H)	118*43*43 mm	105*43*43 mm
Weight	56g	

### Other

Certificates	FCC, CE	
--------------	---------	--

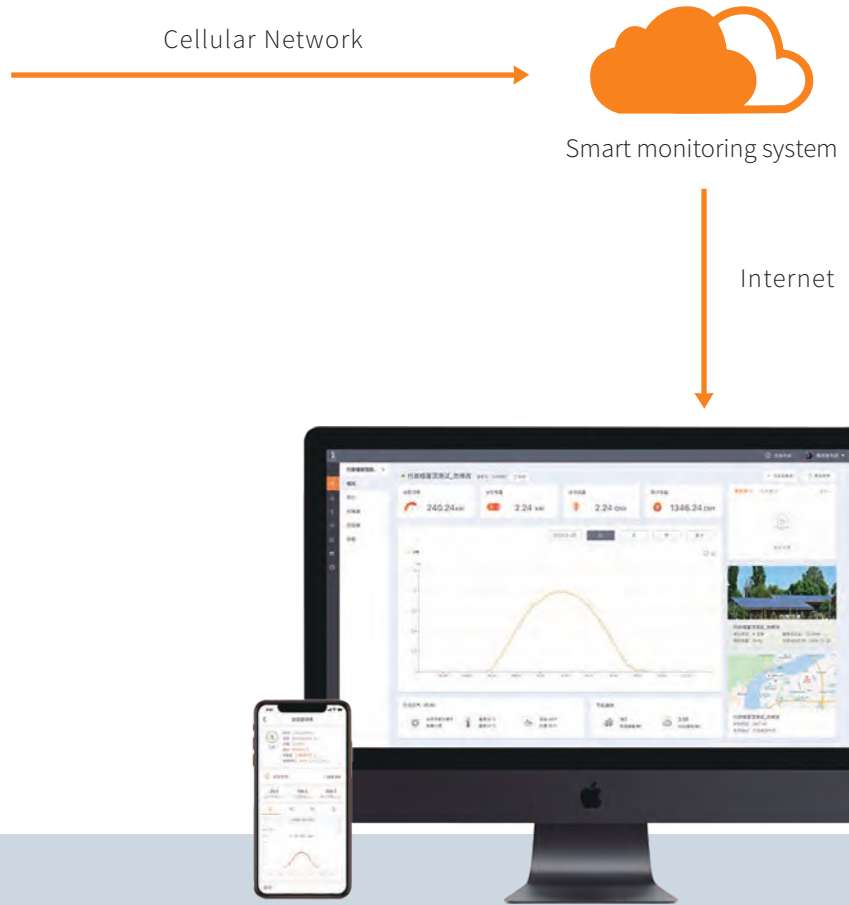
# Accessories

## Solis Cellular Data Logger

### Ginlong Monitoring System



Data Logging Stick



Data Logging Stick  
4G

#### Data Logging Stick: 4G

- Plug and Play
- Easy mobile scan feature to add to your monitoring account
- Free mobile and PC app for monitoring your solar from anywhere
- Advance network reach of 50 states including Hawaii

## Datasheet

Model Name	Solis-Cellular	
Connected Inverters	1	
Serial Data Rate	9600 bps (Default) (1200-115200 bps)	
Data Collection	5 Min (Default) (1-15 Min)	
User Configuration	AT+ Command Set	
	Remote Server	
Bands	LTE FDD: B1/B3/B5/B7/B8/B20 LTE TDD: B38/B40/B41 WCDMA: B1/B5/B8 GSM/EDGE: B3/B8	
Frequency Range	704 MHZ-960 MHZ 1710 MHZ-2690 MHZ	
Transmit Power	Class 3 (23 dBm±2 dB) for LTE-TDD bands	Class 3 (23 dBm±2 dB) for LTE-FDD bands
	Class 3 (24 dBm+1/-3 dB) for WCDMA bands	Class 2 (24 dBm+1/-3 dB) for TD-SCDMA bands
	Class E2 (27 dBm±3 dB) for EDGE 850/900 MHz	Class E2 (26 dBm±3 dB) for EDGE 1800/1900 MHz
	Class 4 (33 dBm±2 dB) for GSM 900	
Antenna Options	External Stick	
Data Interface	RS 485	
Status Indicator	Inverter Connection	
	Server Connection	
	Cellular Network Connection	
Data Storage	Default 2 MBYTE FLASH	
SIM Card	Micro SIM card slot	

### Electrical

Operating Voltage	DC 5 V-12 V
Max. Voltage	DC 15 V
Power Consumption	3.5 W

### Environmental

Operating Temperature	-35 ~ +80°C
Operating Humidity	10-90% Relative, Non-Condensing
Storage Temperature	-45 ~ +90°C
Storage Humidity	<40%
Protection Class	IP 65

### Physical

Dimensions(L*W*H)	1.85*1.61*6.3 in (47*41*160 mm)
Weight	130 g
External Interface	4-Pin Aviation Style Circular Connector
Firmware Upgrade	Remote

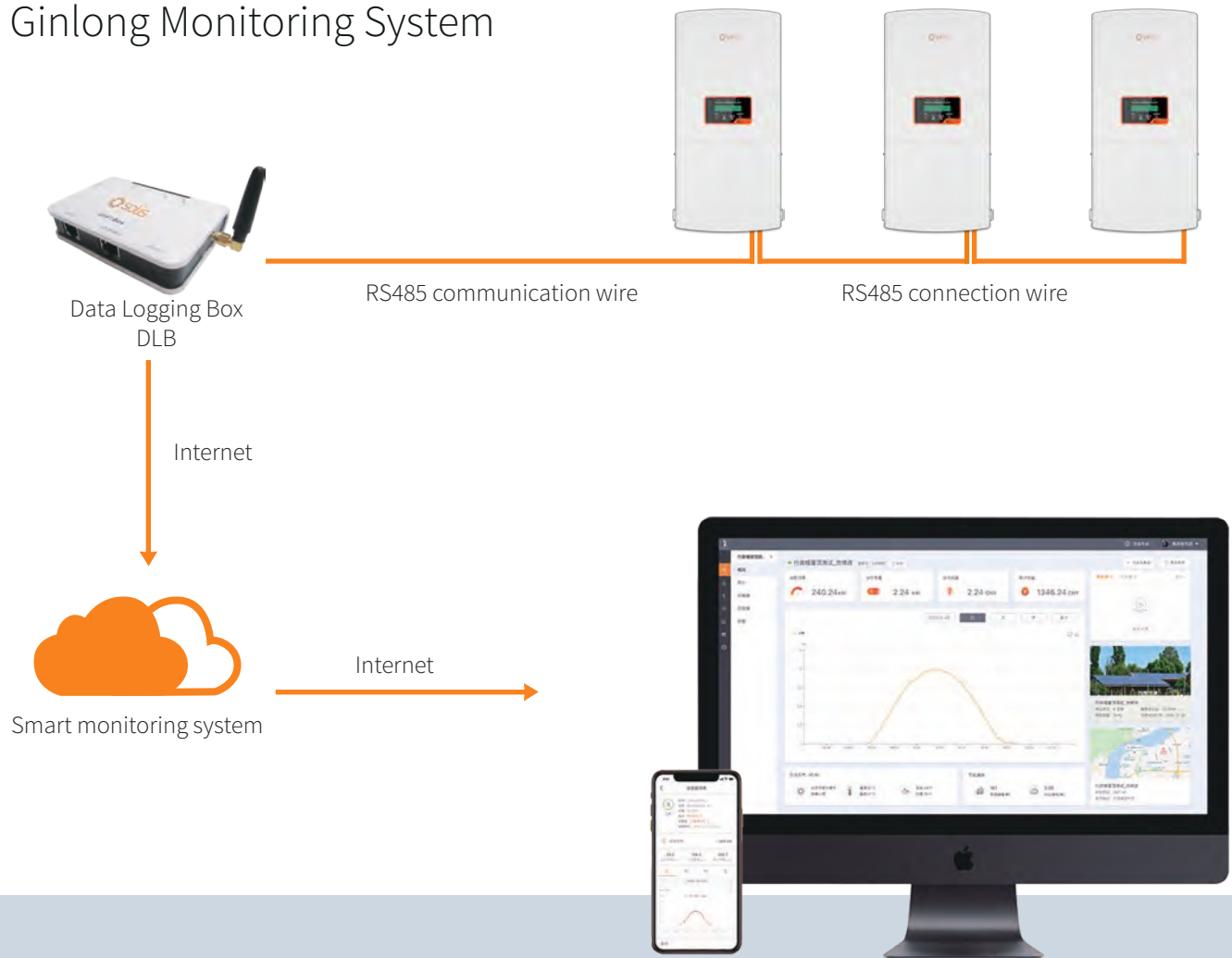
### Other

Other parameters	Real Time Control, HTTP
Area	North America
Warranty	2 years
Certificates	CE, FCC, RoHS

# Accessories

## Solis Data Logging Box

### Ginlong Monitoring System



Data Logging Box DLB

#### Data Logging Box: Wi-Fi

- Quick installation and easy operation
- Monitor your system and data anytime via Wi-Fi
- Easy visualization of data and other information via Internet
- Comprehensive analysis in the event of a fault



## Datasheet

Model	DLB-W(Wi-Fi)
Max. number of inverters	10
Inverter communication	RS485
Remote communication	Wi-Fi (802.11 b/g/n)
Max. communication range	<1km
Communication rate	9600bps (adjustable:1200-57600 bps)
Wi-Fi frequency	2.4GHz
Wi-Fi communication range	300m in outdoor open area without obstruction
Wi-Fi transmitting power	802.11b/g/n: +20dBm/+18dBm/15dBm (max)
Data collect intervals	5 minutes (adjustable: 1-20 minutes)
Preferences setting	Web server/serial AT instruction
Firmware updates	Serial/wireless
Data access	Serial/zpoint-to-point/remote server
Status display	4 LEDs

### Electrical

Input voltage	DC 5V
Static power consumption	<1.6W
Max. instantaneous power consumption	<2.5W

### Environmental

Operating temperature	-10 to 65°C
Operating humidity	10%-90% relative humidity, no condensation
Storage temperature	-40 to 65°C
Storage humidity	<40%
Protection class	IP21

### Physical

Dimensions (length*width*height)	110*86*26mm
Weight (g)	108

### Other

Warranty	2 years
Certificates	FCC, CE, RoHS



## Case study







Mexico-Tamaulipas Carport, Mexico 5MW





ABP Ipswich, UK 1MW



Lincolnshire, UK 140kW



JTC Solar Farm, Singapore 5MW



Lumax Industries Ltd, India 750kW



Georgia-Boviet Woodland, U.S.A 1.6MW



Urussanga city Santa Catarina, Brazil 200kW



Dallas, USA 64kW



Punjab, India 150kW





Russia 4.2kW



Igrejinha, Brazil 6kW



Grundfos Rooftop, UK 123.4kW



Adel Vokes Road, Australia 65.85kW



Monash, Australia 1MW



Teheran, Iran 50kW



Västra Götaland, Sweden 43.31kW



RSWM, India 3.6MW





Valinhos, Brazil 5kW



Brazil 2kW



Jamaica 20kW



Costa Rica 47kW



USA 16kW



Kansas, U.S.A 25kW



California, U.S.A 15kW



UK 4.4kW



Installed On the Eiffel Tower





Shanghai Volkswagen Photovoltaic solar carport, China 55MW





# Case study



Zhejiang Changer, China 13MW





Zhejiang HZW 470kW



Zhejiang HONGXING 380kW



Zhejiang PINGHU Bus Station 472kW



Zhejiang CJYIN 1.02MW



Shenzhen Jiangnan Times Building 600kW



Shandong Rong Xiang 4.2MW



Shandong Guangxin Food 6.06MW



Tyco Electric, Panan Jinhua Zhejiang 1.5MW





Zhejiang-GAOTERUI 260kW



Zhejiang- Wanli Food 800kW



Ninghai AB hall, modern home plaza 1.53MW



Shandong YUELONG 3.5MW



Zhejiang Anboke 2MW



Changzhou Vaillant 2MW



Zhejiang SORJ 3.9MW



Hainan JiuLongGlass 1.7MW





Hebei Zhangjiakou poverty alleviation PV Plant 5.1MW



Liaoning Yingkou Jiuzhai PV plant 20MW



Shanxi Lvliang ZhongYang poverty alleviation PV Plant 10.3MW



Hebei Qinghuangdao poverty alleviation PV Plant 9.7MW



Shandong Leling poverty alleviation PV Plant 50kW



Shanxi Xiyang poverty alleviation PV Plant 7.2MW



Qinghai HuzhuBanyan poverty alleviation PV Plant 2MW



Hebei Qinghuangdao poverty alleviation PV Plant 5MW





Jilin Heishui Fengman poverty alleviation PV Plant 5MW



Beijing Shunzhen Green Harbor's Plant 5.5MW



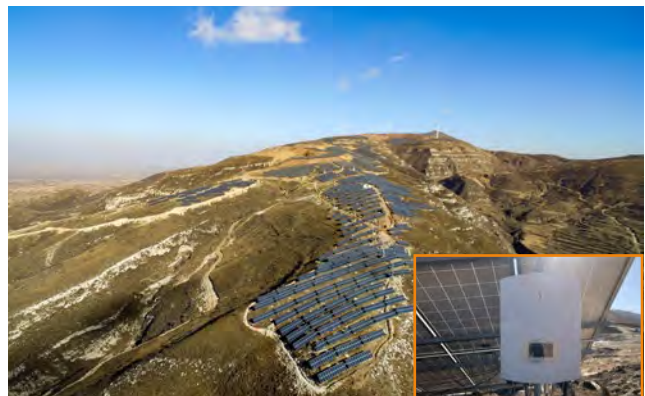
Jiangxi Ganzhou Hengjiang poverty alleviation PV Plant 8.45MW



Shandong Weifang Linqupoverty alleviation PV Plant 20MW



Hebei Baoding Fuping poverty alleviation PV Plant 6.6MW



Shanxi Xinzhou NingWu poverty alleviation PV Plant 18.11MW



Shanxi Xinzhou FanShi poverty alleviation PV Plant 8MW



Shanxi Yizhou Jingle poverty alleviation PV Plant 36.3MW













Hebei Zhangbei Agricultural-photovoltaic hybrid PV plant 50MW



Shanxi Guangling PV plant 1.47MW



Huaneng Yimin surface mine PV plant 20MW



Jiangxi Ganzhou PV Plant 3.5MW



Inner Mongolia Khobqi Desert 20MW



Zhejiang Hangbu Agricultural-photovoltaic hybrid PV plant 30MW



Hubei Guanyin Agricultural-photovoltaic hybrid PV plant 20MW



Quzhou Qinghu Agricultural-photovoltaic hybrid PV plant 20MW





Zhejiang Jinyun Beitai 21MW



Zhejiang Zhuxi 25MW



Zhejiang Dajie Agricultural-photovoltaic hybrid PV plant 3MW



Zhejiang Longyou Agricultural-photovoltaic hybrid PV plant 25MW



Inner Mongolia Khobqi Desert 336kW



Liaoning Gaizhou Jiuzhai PV plant 20MW



Zhejiang Jiangshan Xintang Reservoir 836kW

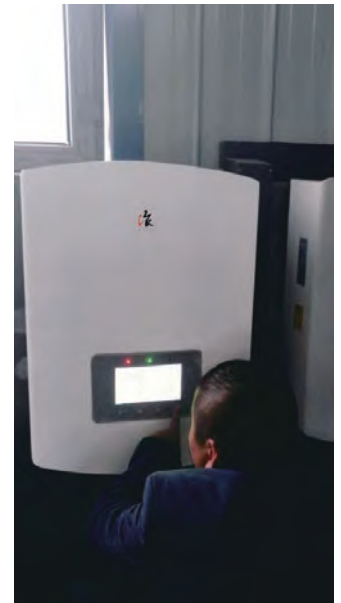


Liaoning Jiuzhai Gaizhou PV plant 20MW





Shanxi Lvliang ZhongYang Jiajingtancheng PV rooftop 450kW

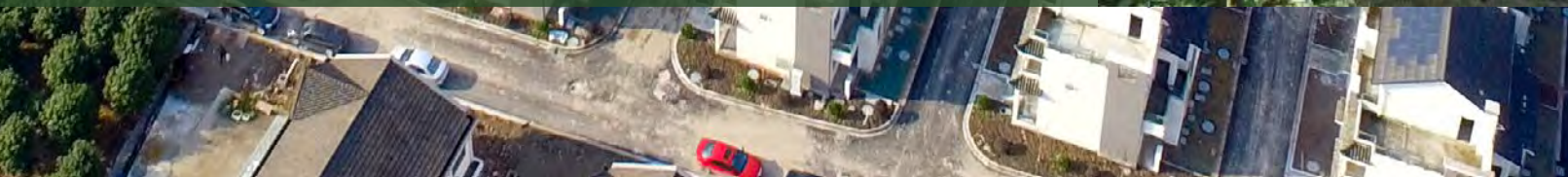


Heilongjiang PV plant





The largest photovoltaic building integration village in Zhejiang Province, China 300kW







## Contact Us:

### HQ:

📍 No.57 Jintong Road, Binhai Industrial Park, Xiangshan, Ningbo, Zhejiang, 315712, China

☎ +86 574 6580 2188    ✉ sales@ginlong.com

### US:

📍 565 Metro Pl. S. Suite 3214, Dublin OH 43017 USA

☎ +1 866 438 8408    ✉ ussales@solisinverters.com

### UK:

📍 1 Church Street Bootle Liverpool, L20 1AF, UK

☎ +44 113 328 0870    ✉ uksales@ginlong.com

### India:

📍 104, wing -A, 1st floor, Techno1 City Premises Plot no. X-4/1 Mahape Navi Mumbai- 400710, India

☎ +91 224 9744 251 (sales)    ✉ Indiasales@ginlong.com  
+91 224 9744 021 (service)

### EU Service Center:

📍 Calle de Serrano, 240 - 1ª planta 28016 Madrid - Spain

☎ +34 914 430 810    ✉ sales@ginlong.com

### Brazil:

📍 Sala 618, R. Paulo César Fidélis, 39 - Lot. Res. Vila Bella, Campinas - SP, Brasil, 13087-727

☎ +55 19 996133803    ✉ sales@ginlong.com

### Netherlands:

📍 Nokweg 3-B, 2451 AL Leimuiden, Nederland

☎ +31 85 048 1300    ✉ benelux@solisinverters.com

### Australia:

📍 No. 5 / 109 Tulip Street, Cheltenham, Vic. 3192 Australia

☎ +61 3 8555 9516    ✉ sales@ginlongaust.com.au

### South Africa:

📍 Ground Floor, Building 4 Quadrum Office Park 50 Constantia Boulevard, Constantia Kloof Ext. 23, Johannesburg, South Africa

☎ +27 11 534 8461    ✉ sales@ginlong.com

W:ginlong.com

